



**239a Minehead Court
Harrow, HA2 9DT**

£2,000 PCM

First Floor 3 bedroom apartment within walking distance of local shops and transport links, double glazed , gas central heating, communal rear gardens, EPC "C", Council Tax band "C", available now

239a Minehead Court, Harrow, HA2 9DT

Lounge

15'7" x 11'6" (4.76 x 3.51)



Bedroom 2

11'3" x 8'3" (3.45 x 2.54)



Kitchen

10'8" x 10'2" (3.26 x 3.11)



Bedroom 3

11'9" x 6'10" (3.59 x 2.09)



Bedroom 1

12'9" x 9'6" (3.90 x 2.91)



Bathroom

7'11" x 7'8" (2.43 x 2.35)



Outside

Front & Side

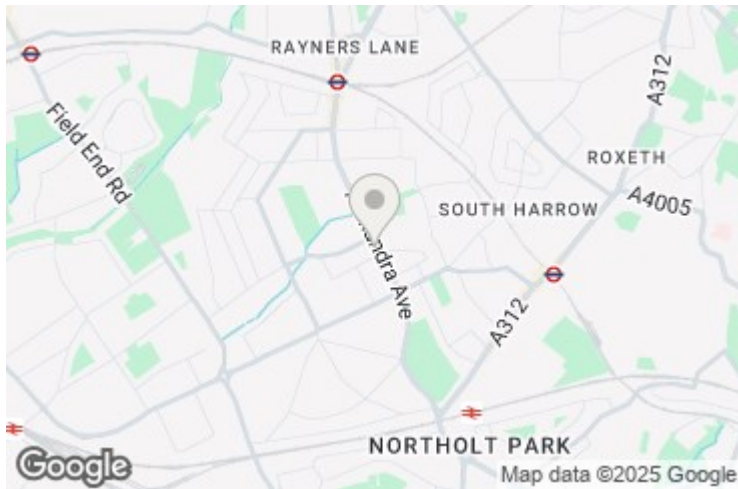
Permit Parking for 2 cars

Rear

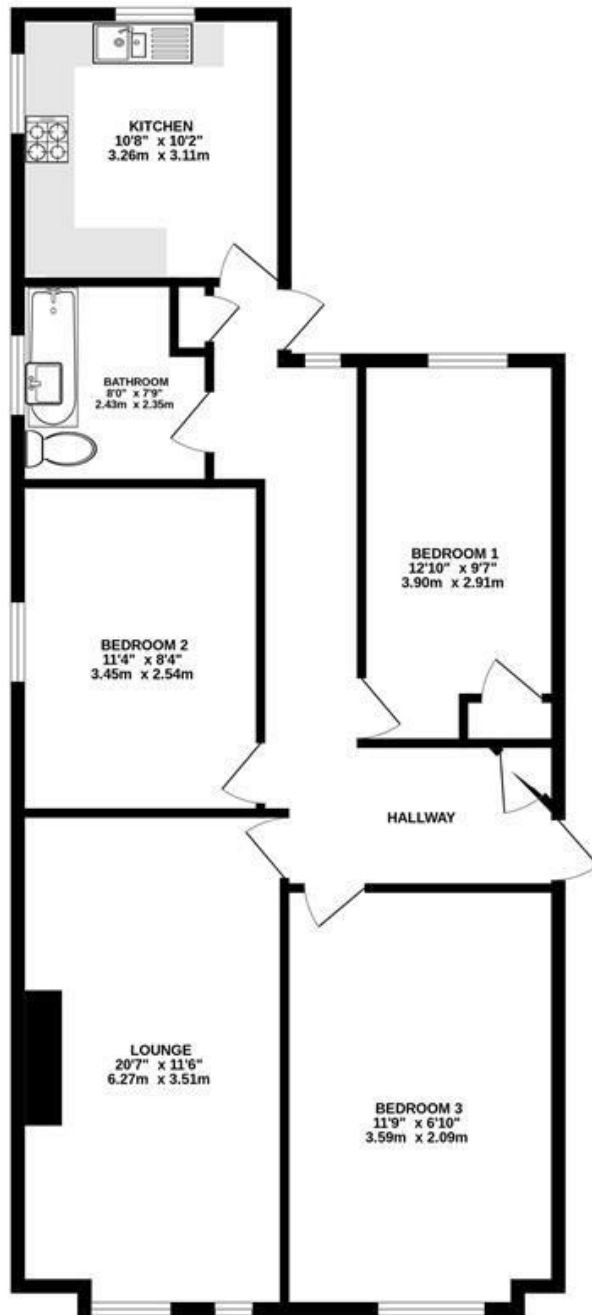
239a Minehead Court, Harrow, HA2 9DT



Communal rear gardens



GROUND FLOOR
786 sq.ft. (73.0 sq.m.) approx.



TOTAL FLOOR AREA : 786sq.ft. (73.0 sq.m.) approx.

Whilst every attempt has been made to ensure the accuracy of the floorplan contained here, measurements of doors, windows, rooms and any other items are approximate and no responsibility is taken for any error, omission or mis-statement. This plan is for illustrative purposes only and should be used as such by any prospective purchaser. The services, systems and appliances shown have not been tested and no guarantee as to their operability or efficiency can be given.
Made with Metropix ©2025

Energy Efficiency Rating		Current	Potential
Very energy efficient - lower running costs			
(92 plus) A			
(81-91) B			
(69-80) C			
(55-68) D			
(39-54) E			
(21-38) F			
(1-20) G			
Not energy efficient - higher running costs			
England & Wales		70	79
		EU Directive 2002/91/EC	

Environmental Impact (CO ₂) Rating		Current	Potential
Very environmentally friendly - lower CO ₂ emissions			
(92 plus) A			
(81-91) B			
(69-80) C			
(55-68) D			
(39-54) E			
(21-38) F			
(1-20) G			
Not environmentally friendly - higher CO ₂ emissions			
England & Wales			
		EU Directive 2002/91/EC	